

SecuraNET EM 500 UTM

The Next Generation Security System



The Average Person's Peripheral vision only extends 90% on either side of the head.

Shouldn't you know and protect what's going on behind your back?

SecuraNET EM 500 UTM is a comprehensive perimeter security system designed to protect computer networks from the ever evolving perils of internet.

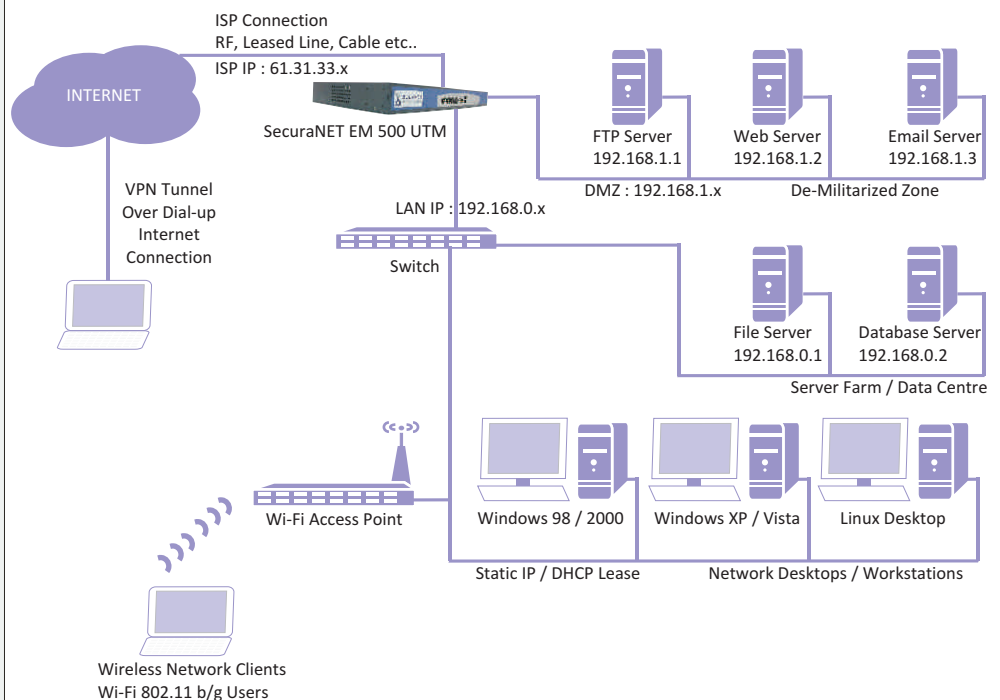
SecuraNET EM UTM series of Unified Threat Management Appliances are widely used by Corporates, Institutions and Enterprises for total peace of mind; to completely protect their network with state of the art firewall, attack prevention, VPN, gateway antivirus, anti-spam, content filter, multi WAN/ISP support, bandwidth management, enhancing productivity and efficiency.

SecuraNET EM 500 UTM

Advantages

- Secure** with Active Firewall powered by Attack Prevention System
- Protect** from Viruses, Worms, Trojan, Backdoors, Hackers, Attacks
- Manage** bandwidth to increase efficiency and productivity
- Accelerate** Internet access with web proxy caching system
- Authenticate** all users with strong authentication parameters
- Integrate** remote branch offices with 128bit encrypted IPSEC VPN tunnels
- Visualize** all activities with detailed report logs
- Ensure** high availability with fault tolerant automatic fail-over with Multi WAN support

Deployment Diagram



www.bulwarks.com

SecuraNET EM 500 UTM

The Next Generation Security System



Features

Active Firewall

- Dynamic and static NAT and Masquerading.
- Port Address Translation (PAT)
- Supports H323 behind the firewall
- Denial of service (DoS) attacks like SYN flood
- Powerful stateful and deep inspection
- Protocol exploitations, Leveraging weaknesses in DNS, FTP, ICMP, IMAP, POP3, RPC, SNMP, x11 and Other Network protocols.

Attack Prevention System (APS)

- IDS with 4000 patterns & IPS
- Application and Protocol Inspection
- Hostile probing, Port scans, Backdoor probes, Illegitimate interrogations, Host sweeps and Other activities

Virtual Private Network (VPN)

- IPsec VPN
- Advanced Encryption: Includes DES, 3DES
- Authentication Methods PSK, Raw RSA Keys
- Secure VPN tunnels for gateway-gateway, client-gateway
- Road Warrior Support.
- Hash Algorithms : MD5, SHA-1
- Diffie Hellman Groups - 1, 2, 5, 14, 15, 16

System Management & Administration

- Single Web interface for administration (HTTPS)
- Secure remote administration through shell (SSH)
- Appliance hardware monitoring tools

Internet Access Control

- Access to Internet resources given on basis of IP / Username
- IP / User based Limited website browsing access
- Bandwidth restriction on individual IP with specified ports
- User can be restricted to use Internet from single or multiple node
- Clientless logon function.

User and Group Based Controls

- Class-based policies.
- Group Definitions like Senior Management, Middle Management, Staff etc.
- Internal Database

Web Content Filter

- Expression / URL / Domain / Filetype based filter
- P2P, HTTP upload blocking
- Email Antispam that seamlessly integrates with email servers
- Instant Messengers Filters
- Bypass Filtering for Specific IP addresses as specified
- Block Malware, Phishing, Pharming URLs

Gateway Virus Protection

- Full Heuristics Engine
- Real Time Database
- Perimeter Virus Protection
- Virus, Worm, Trojan Detection & Removal
- Inbound / Outbound Email Virus Scan
- Spyware, Malware, Phishing Protection

Anti - Spam Protection

- Subject line tagging
- MIME header check
- Real-time Blacklist (RBL)
- IP address blacklist / exempt list
- Redirect spam mails to dedicated email address

Bandwidth Management

- Guaranteed maximum Bandwidth.
- Prioritize traffic by Protocol.
- Application-specific traffic class.
- Subnet-specific traffic class.
- Multi WAN bandwidth reporting

Load Balancing and Failover Support

- Multiple ISP supported
- WRR based Load Balancing between ISPs
- Automatic Failover

Advanced Reporting

- Web Surfing Report
- Firewall Report
- VPN Report
- IDS / IPS Report
- Content Filter Report
- Policy Violation Report
- Real-time report of internet traffic

Specification

Interfaces

10/100/1000 Ethernet ports	4
DMZ/WAN port	Available
COM port	1
USB port	2

Physical

Form Factor	1U 19" Rackmount
Chassis Material	Steel

Certification

CE, EMC, FCC, EC, ISO 9001:2000

System Performance

Concurrent Sessions	400,000
New Sessions / Second	10,000
Firewall throughput (Mbps)	500

Environmental

Operating Temperature	0° to 45° C
Storage Temperature	20° to 70° C



1-B, Urmi Society, Productivity Road, Baroda, India - 390020

Mobile : +91 9825566011

Call : +91 (265) 6542099

Web : www.bulwarks.com

Email : contact@bulwarks.com